

Kensington



Elevation A



Elevation B



Elevation C



Elevation D



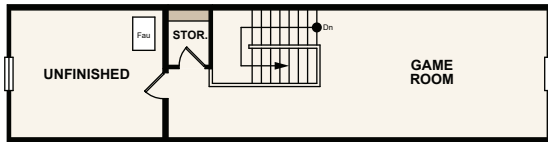
Elevation E



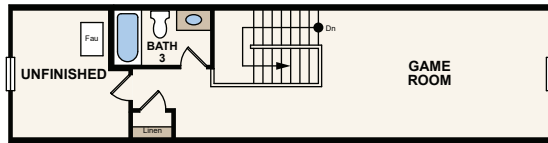
In a continuous effort by Century Communities to improve the quality of your home, we reserve the right to change features, options, plans and specifications without notice. Floorplans and elevation renderings are conceptual artists' renderings for marketing purposes only. Elevations and floorplans may vary based on actual homesite and Century Communities may be required to build the home in a mirror image to the floorplans shown, including the garage, due to construction and building design requirements of the homesite. Significant changes may be made during or after the construction of the model homes. Century Communities reserves the right to modify, relocate or eliminate any or all of the features, specifications, plan utilities, design or shape thereof without notice or obligations to the purchaser. Please see your onsite sales associate for additional information. Brick/Stone returns are not standard on the elevations, please see your onsite agent for details. Century Communities. Revised 12/17/2020

Kensington

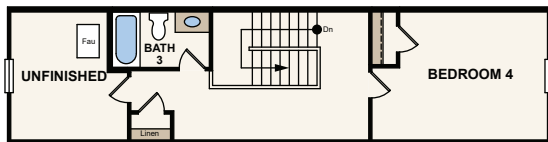
2243 SQ. FT. | ONE STORY | 3 BEDROOM | 2 BATHROOMS | 2-CAR GARAGE



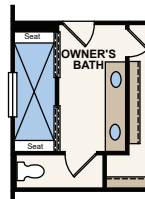
OPT. SECOND FLOOR GAMEROOM
(NOT AVAILABLE WITH OPT. BASEMENT / ONLY
AVAILABLE WITH ELEVATIONS D OR E)



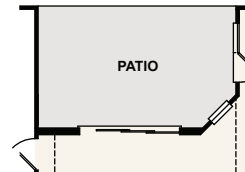
OPT. SECOND FLOOR GAMEROOM / BATH 3
(NOT AVAILABLE WITH OPT. BASEMENT /
ONLY AVAILABLE WITH ELEVATIONS D OR E)



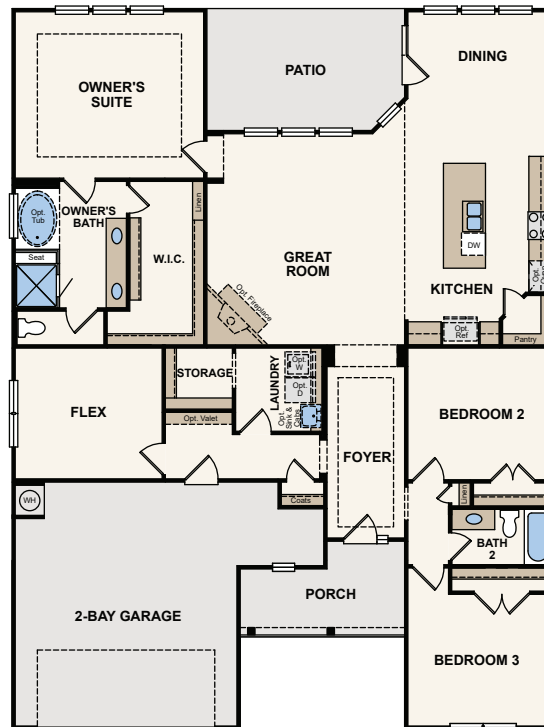
OPT. SECOND FLOOR BEDROOM 4 / BATH 3
(NOT AVAILABLE WITH OPT. BASEMENT /
ONLY AVAILABLE WITH ELEVATIONS D OR E)



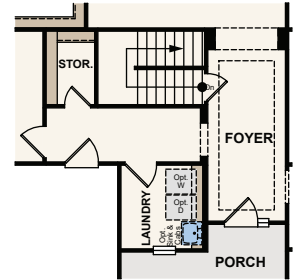
OPT. SPA BATH



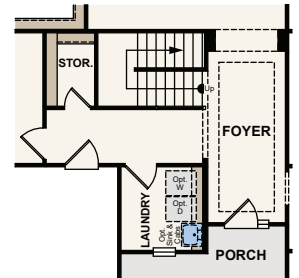
OPT. 9080 SLIDING GLASS DOOR



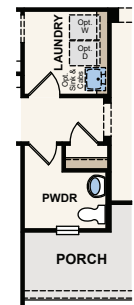
FIRST FLOOR



OPT. STAIRS TO BASEMENT



STAIRS TO OPT. SECOND FLOOR
(NOT AVAILABLE WITH OPT. BASEMENT /
ONLY AVAILABLE WITH ELEVATIONS D OR E)



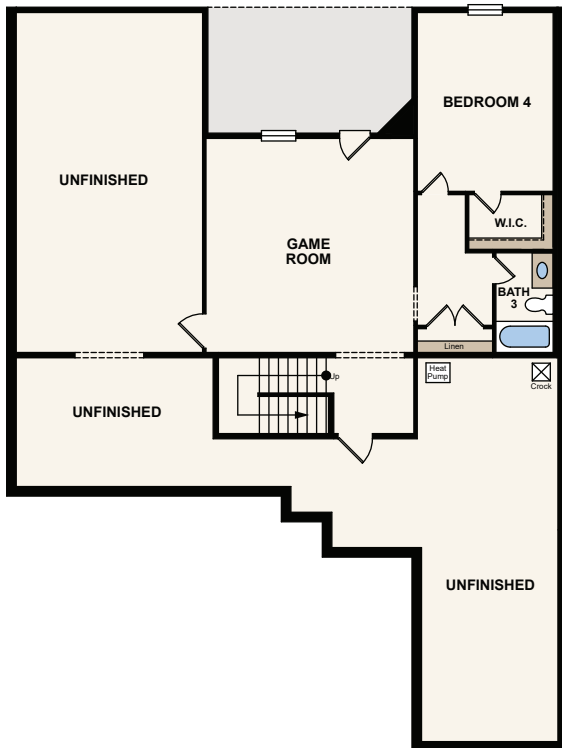
OPT. POWDER BATH
(NOT AVAILABLE WITH OPT. SECOND FLOOR OR
OPT. BASEMENT)



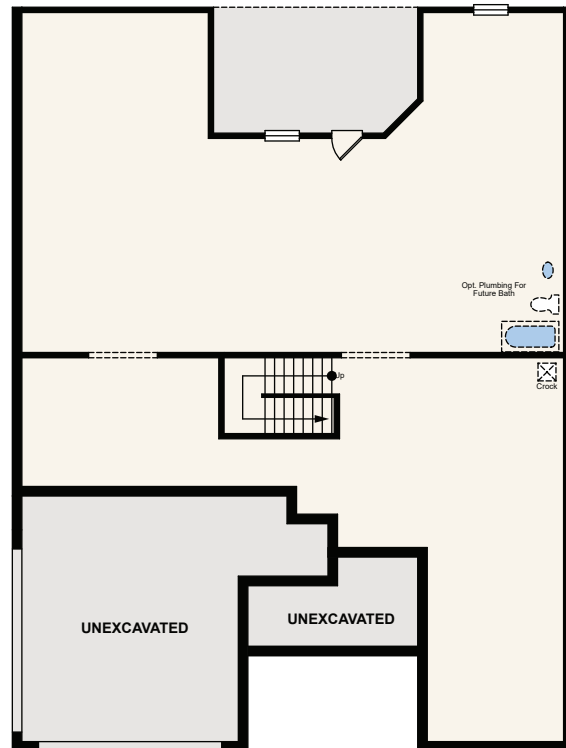
In a continuous effort by Century Communities to improve the quality of your home, we reserve the right to change features, options, plans and specifications without notice. Floorplans and elevation renderings are conceptual artists' renderings for marketing purposes only. Elevations and floorplans may vary based on actual homesite and Century Communities may be required to build the home in a mirror image to the floorplans shown, including the garage, due to construction and building design requirements of the homesite. Significant changes may be made during or after the construction of the model homes. Century Communities reserves the right to modify, relocate or eliminate any or all of the features, specifications, plan utilities, design or shape thereof without notice or obligations to the purchaser. Please see your onsite sales associate for additional information. Brick/Stone returns are not standard on the elevations, please see your onsite agent for details. Century Communities. Revised 12/17/2020

Kensington

2243 SQ. FT. | ONE STORY | 3 BEDROOM | 2 BATHROOMS | 2-CAR GARAGE



OPT. FINISHED BASEMENT



OPT. UNFINISHED BASEMENT



In a continuous effort by Century Communities to improve the quality of your home, we reserve the right to change features, options, plans and specifications without notice. Floorplans and elevation renderings are conceptual artists' renderings for marketing purposes only. Elevations and floorplans may vary based on actual homesite and Century Communities may be required to build the home in a mirror image to the floorplans shown, including the garage, due to construction and building design requirements of the homesite. Significant changes may be made during or after the construction of the model homes. Century Communities reserves the right to modify, relocate or eliminate any or all of the features, specifications, plan utilities, design or shape thereof without notice or obligations to the purchaser. Please see your onsite sales associate for additional information. Brick/Stone returns are not standard on the elevations, please see your onsite agent for details. Century Communities. Revised 12/17/2020